

Improve Productivity through Convenient, Cost-Effective Online Training

PTC University eLearning Subscriptions Offer Affordable Training When and Where You Need it

Are your teams working at top speed? Are they taking full advantage of PTC technology capabilities? Unfortunately, most users only use a fraction of the capabilities PTC technology has to offer. But how do you increase your team's proficiency without sending them to weeks of training?

PTC University eLearning Subscriptions offer a simple, cost-effective approach to helping users increase their proficiency and adoption of PTC products. With online access to over 1500 hours of training content, users can now receive the training they need when and where they need it most – on their desktop.

Learning is a Continuous Process

Have you ever taken a course and found yourself months later struggling to retain some of the information? Do you ever seek to learn more advanced features of an application after you've mastered the basics? Unfortunately, many companies feel that after a person leaves a training class they have all the training they'll ever need.

While traditional instructor-led training courses (ILTs) offer a solid foundation of product knowledge, most users can't retain all of that information. Lessons need to be reinforced before users can move on to different areas of the application. Training on additional modules must be readily available for users who seek to expand their knowledge. Often, offsite training is simply not feasible.

That's why PTC created eLearning Subscriptions. The perfect complement to traditional ILT classes, eLearning provides an avenue for further learning and reinforcement outside the classroom.



eLearning brings the classroom experience directly to your desktop.

The eLearning Advantage – Training 24/7/365

PTC University eLearning Subscriptions give you online access to our full library of basic and advanced Web-based training courses. By simply accessing the online PTC University portal, users can view over 1,500 hours of self-paced training whenever their schedule permits. Unlike other elearning solutions, PTC University Web-based training is an interactive experience, complete with hands-on exercises, demonstrations and recorded lectures. Further, all the material is modularized, so users can focus on the specific topics they need rather than navigate through an entire course.

Quality training, no travel expenses, and available on your schedule – that's the eLearning advantage.

PTC University eLearning Subscriptions

PTC University offers the following eLearning Subscriptions:

- Pro/ENGINEER® – Includes Pro/ENGINEER product family and Pro/INTRALINK® Content
- COACH – Access to short 15-30 minute Pro/ENGINEER learning segments, ideal for those who need to get immediate training on a specific concept
- Windchill® ProjectLink™ – Includes Windchill ProjectLink content
- Windchill® PDMLink™ – Includes Windchill PDMLink and Pro/INTRALINK content
- Arbortext® – Includes Arbortext product content

Customers with multiple PTC products can receive a combination of eLearning Subscriptions at a discounted price.

Subscriptions are purchased on a per-user or corporate basis. With the purchase of optional support, users will also receive access to any new content that becomes available, updates to the learning management system, and support through our PTC University Support Team.

Unlimited Access to eLearning Content

Each eLearning Subscription includes unlimited access to an entire library of eLearning content for the selected product(s):

- Web-based Training – an entire library of self-paced courses complete with recorded lectures and demonstrations, HTML-based lecture reviews, comprehensive lab exercises and learning assessments
- Recorded Virtual Classroom Material – a host of specialty topics taught with an instructor – on your own time (where available)
- Pro/FICIENCY Benchmark Assessment – an objective, Web-based tool to assess user proficiency and educational program effectiveness
- Online Communities – access to extensive knowledge in a role-based virtual format (available with hosted Learning Management System)
- eKnowledge Assets – downloadable resource materials that augment training and act as handy references (where available)

Track Development Progress through Learning Management System

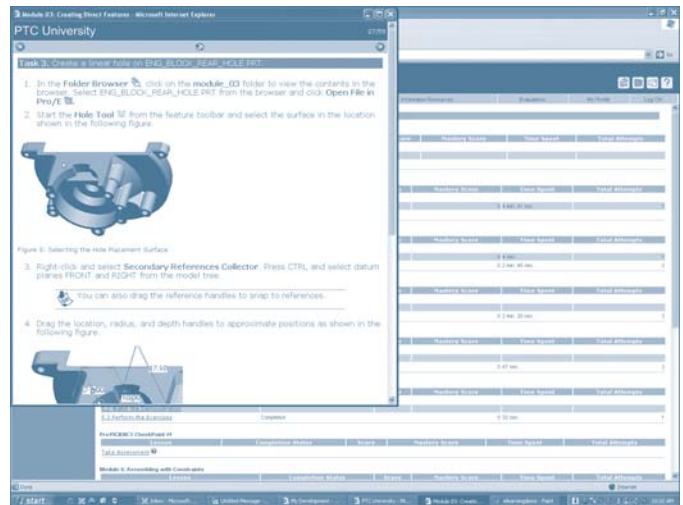
All subscriptions also provide full access to the PTC University Learning Management System (LMS).

Built on leading edge learning management system technology, the PTC University LMS provides significant value to both students and managers. Students receive an online, personalized portal where they can:

- Maintain a personal development plan
- Search available courses
- Access Web-based training
- Receive targeted development suggestions based on assessment results
- View complete transcripts and Pro/FICIENCY results

At the same time, team and company leaders can use the tool to:

- Track effectiveness of training programs
- View online individual and team proficiency reports
- Create development plans for their entire staff
- Track team enrollments and transcripts online



Web-based training includes interactive lab exercises, recorded lectures, demonstrations and proficiency assessments.

Pro|ENGINEER®

 Arbortext®

Windchill® ProjectLink™

Windchill® PDMLink™

eLearning Subscriptions are available for these PTC products. See a full list of courses included with each subscription at:

www.ptc.com/go/elearning

For More Information

To learn how to increase the productivity of your team through PTC educational offerings, contact a PTC training adviser at:

1-888-782-3776 or visit www.ptc.com/go/elearning

©2006, Parametric Technology Corporation (PTC). All rights reserved. Information described herein is furnished for informational use only, is subject to change without notice, and should not be construed as a guarantee, commitment, condition or offer by PTC. PTC, the PTC Logo, Pro/ENGINEER, and all PTC product names and logos are trademarks or registered trademarks of PTC and/or its subsidiaries in the United States and in other countries. All other product or company names are property of their respective owners.